



SHENZHEN JASIC TECHNOLOGY CO., LTD.

Address: No. 3, Qinglan 1st Road, Pingshan District, Shenzhen, Guangdong, China

Postcode: 518118

Tel: +86 (0755) 8670 6250

Fax: +86 (0755) 2736 4108

Website: www.jasitech.com

E-mail: sales@jasitech.com

@JASICTechOfficial JASIC Technology Co., Ltd. @jasitech_official



JASIC 3-in-1 Handheld Fiber Laser Welding Systems

LS-15000IV(G4J53) & LS-20000IV (G4J54)

ALS-800 & ALS-1200

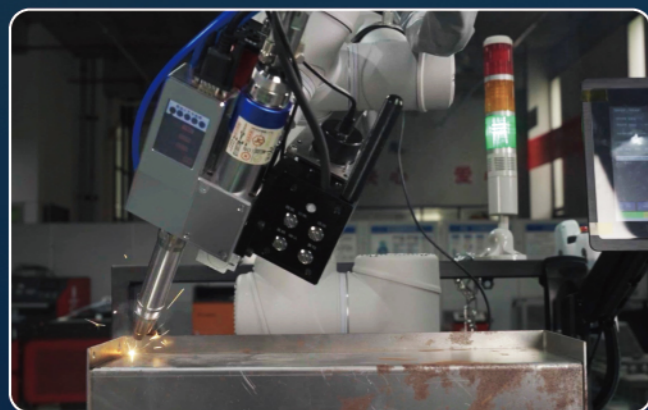
The information in this document may contain statements or predictive statements including, without limitation, statements regarding product specifications, current/future financial and operating results, future product portfolios, new technologies, etc. There are a number of factors that could cause actual results and developments to differ materially from those expressed or implied in these statements. Therefore, such information is provided for reference purpose only and constitutes neither an offer nor an acceptance. JASIC may change the information at any time without notice.



Proprietary Control System

Our control system features fully digital galvanometer control technology that monitors laser operation in real-time. When abnormal oscillation or positioning conditions are detected, the laser automatically shuts down to protect users and equipment

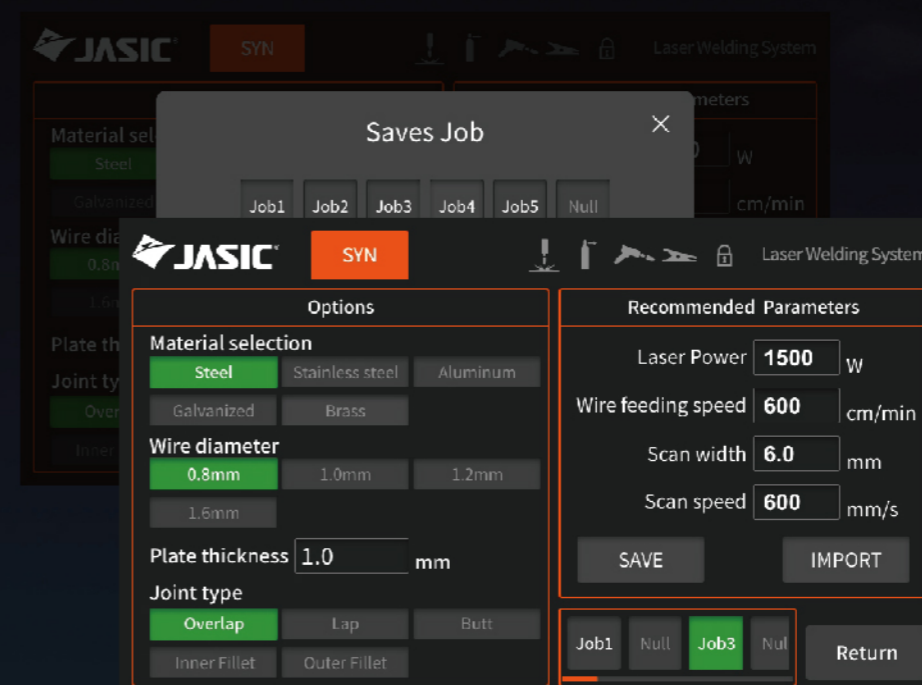
Compatible with robots and other automated welding equipment via digital communication interface for diverse application needs



Intuitive Human-Machine Interface

Features rugged industrial touchscreen with simplified menu structure and clear, straightforward interface

Control knob for convenient parameter setting



Built-in welding parameter database helps beginners get started quickly

Enhanced Welding Torch

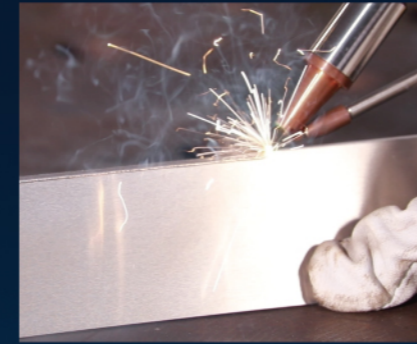
Torch Weight **650g**



New wire feeder on/off switch
One-touch mode switching between
filler wire welding and fusion welding

Integrated wire feed/retract function reduces operator handling time
Wire feeding: Double-tap torch switch for automatic wire feeding
Wire retracting: Triple-tap torch switch for automatic wire retraction

3 Modes Switching



Welding



Cutting



Cleaning

Model	HD21	Laser Input Method	Coaxial
Interface Type	QBH	Laser Wavelength	1070±20nm
Laser Power	≤3000W	Focal Length Options	150mm/400mm/800mm
Collimating Focal Length	60mm	Shielding Gas	Nitrogen/Argon
Scanning Width	0-6mm	Weight	0.65kg



Ergonomic design with comfortable grip,
suitable for long-time operation

Fast Weld Formation, Consumable Savings

Stable, concentrated heat source eliminates spatter, reducing consumable consumption - less material waste, lower operating costs

Integrated Mobile Laser Welding Unit

Air-cooled system with mobile cart for gas cylinder transport, enabling welding operations at different locations



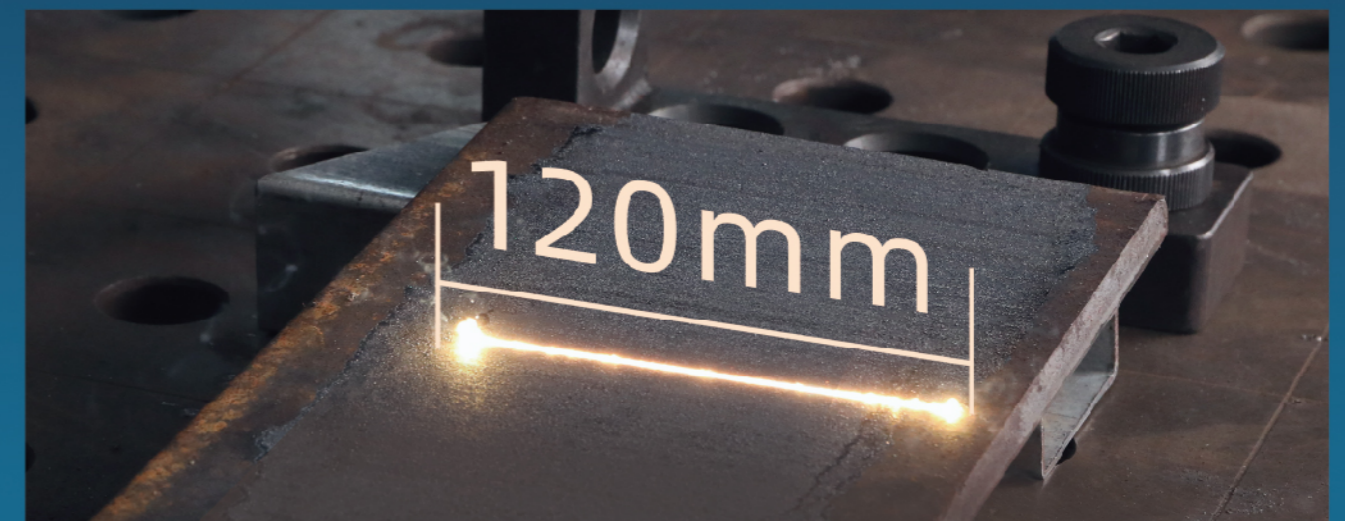
Superior Weld Quality, No Grinding Required

Laser welding delivers smooth, strong joints with minimal heat affected zone (HAZ). Low distortion eliminates grinding needs while reducing dust and noise - less post-processing, higher productivity



High Cleaning Efficiency

800mm focal length enables comfortable handheld operation. 120mm maximum cleaning width delivers superior cleaning performance

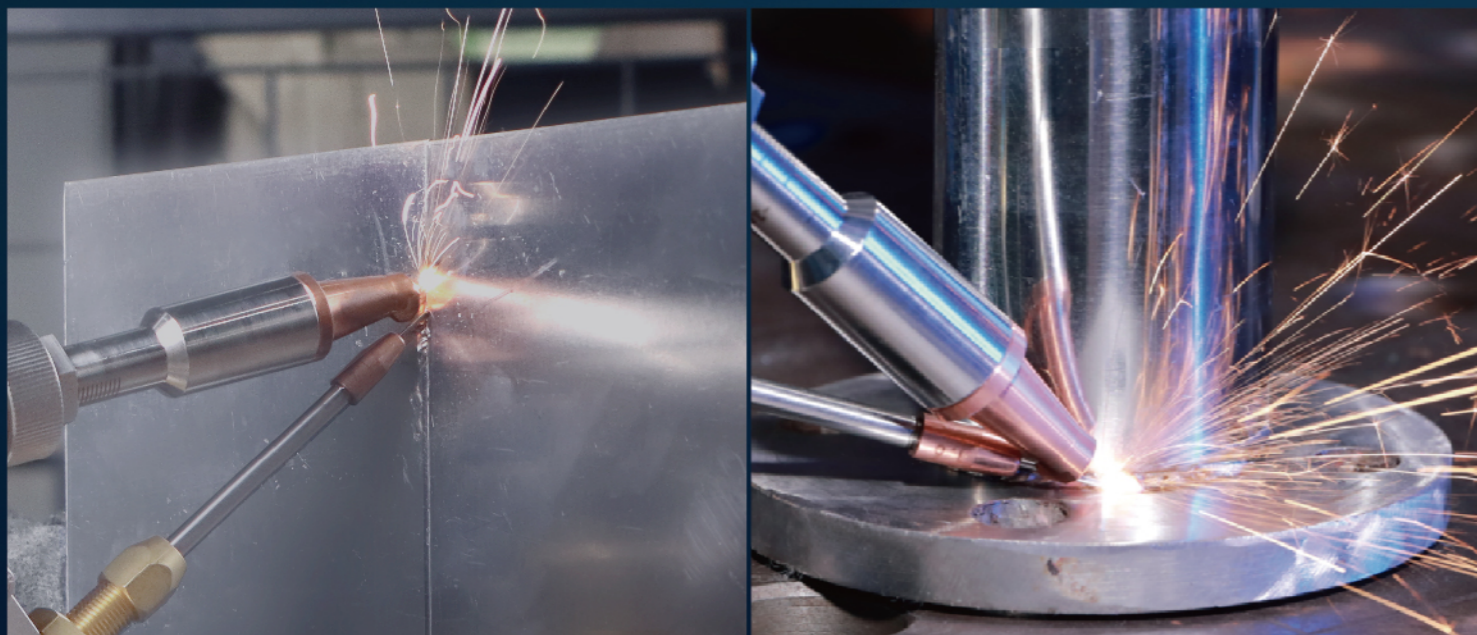


Precision Laser Cutting, Smooth Cut Surface

Precise laser heat input delivers narrow, burr-free cuts for straight and curved cutting. Simple operation with high efficiency across various metal materials

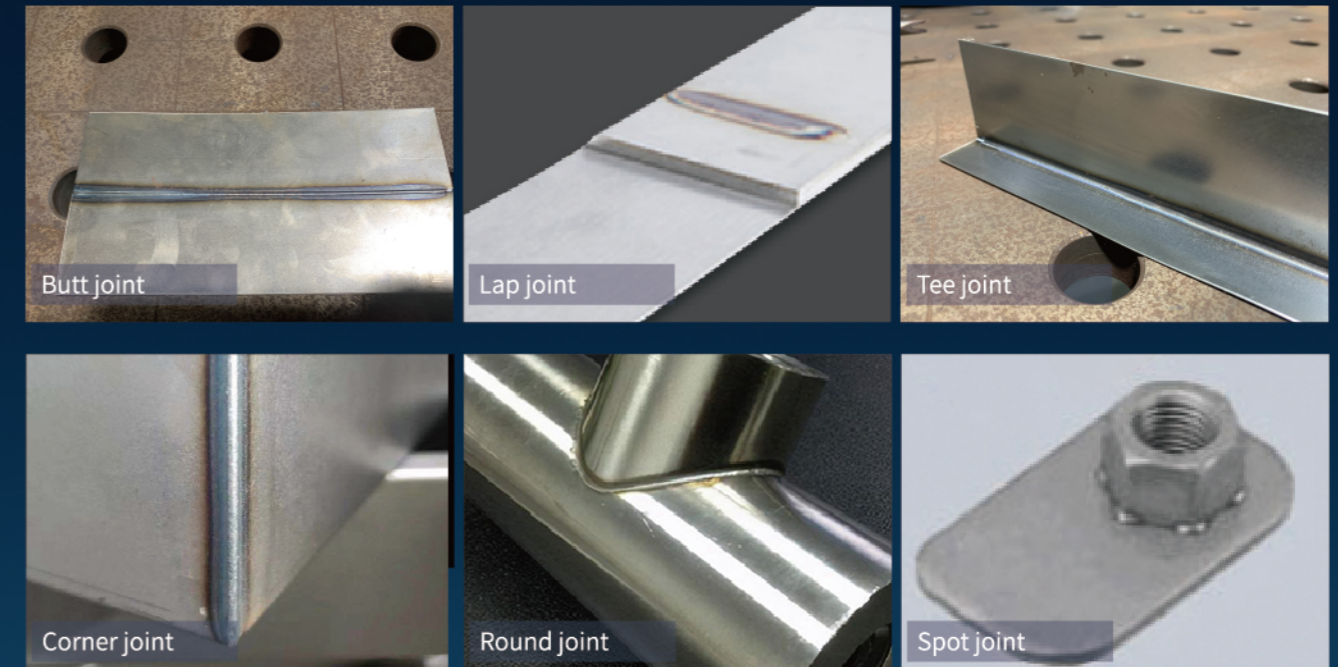
High Cost Efficiency

Low welding skill requirement, save on labor cost for experienced arc welder
Almost 0 maintenance needed for key component, pump source has over 100k hours life span



Simple Operation, Versatile Applications

Suitable for various position welding and spot welding operations



General Aftersales Policies

As a welding manufacturer with comprehensive quality assurance, we provide the following warranties for our handheld fiber laser welding machines:

- 36 months warranty on the whole machine
- 36 months warranty on the laser generator
- 36 months warranty on the water cooler
- 36 months warranty on the laser welding gun

Please note: the following items/situations are not covered by the warranty.

- Wearing parts and optical lenses are excluded from the warranty
- Product damage or quality issues caused by improper operation or mishandling are excluded from the warranty
- Product damage or quality issues caused by unauthorized repairs using third party parts are excluded from the warranty
- Damage caused by operation outside the scope of the product's technical requirements
- Damage to the laser caused indirectly by faults due to the customers' software or interface
- Damage caused by incorrect installation, maintenance/repair or operational use not specified in the user manual
- Damage caused by human factors during use, especially due to failure to take the necessary antifreeze measures when needed
- Damage caused by failure to comply with relevant requirements on water cooler's maintenance specified in the user manual

Water-Cooled

LS-15000IV

LS-20000IV



Model	LS-15000IV (G4J53)	LS-20000IV (G4J54)
Power Supply (V)	1ph AC220±10%	1ph AC220±10%
Power Frequency (Hz)	50	50
Rated Input Power (W)	5.8	8.7
Rated Laser Power (W)	1500	2000
Fiber Length (m)	10	10
Wire Feed Speed (cm/min)	25-600	25-600
Main Unit Dimensions (mm)	760*357*695	760*357*695
Main Unit Weight (kg)	84	92

Air-Cooled

ALS-800

ALS-1200



Model	ALS-800	ALS-1200
Power Supply (V)	1ph AC230±10%	1ph AC230±10%
Power Frequency (Hz)	50/60	50/60
Rated Laser Power (W)	800	1200
Fiber Length (m)	5	5
Wire Feed Speed (cm/min)	25-600	25-600
Main Unit Dimensions (mm)	926*482*756	926*482*756
Main Unit Weight (kg)	62	63

*The product specifications and functions are subject to change.